

General Info

Cuzco, PER

S 13° 32.1' W 71° 56.3' Mag Var: 2.4°W

Elevation: 10860'

Public, IFR, Control Tower, Customs

Time Zone Info: Bogota, Lima, Quito Time GMT-5:00 no DST

Runway Info

Runway 10-28 11155' x 148' asphalt

Runway 10 (99.0°M) TDZE 10860'

Runway 28 (279.0°M) TDZE 10702'

Communications Info

ATIS **127.0**

Cuzco Tower **118.1**

Cuzco Ground Control **121.9**

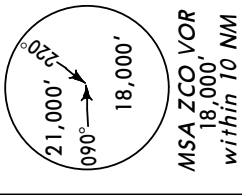
Cuzco Approach Control **120.6**

SPZO/CUZ
TNT FAP ALEJANDRO
VELAZCO ASTETE INTL

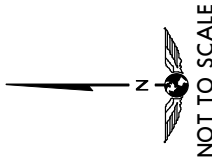
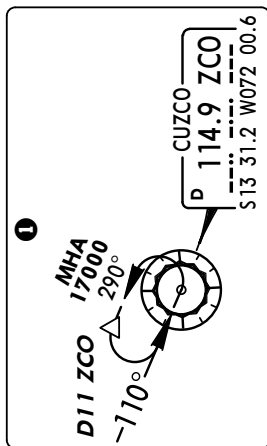
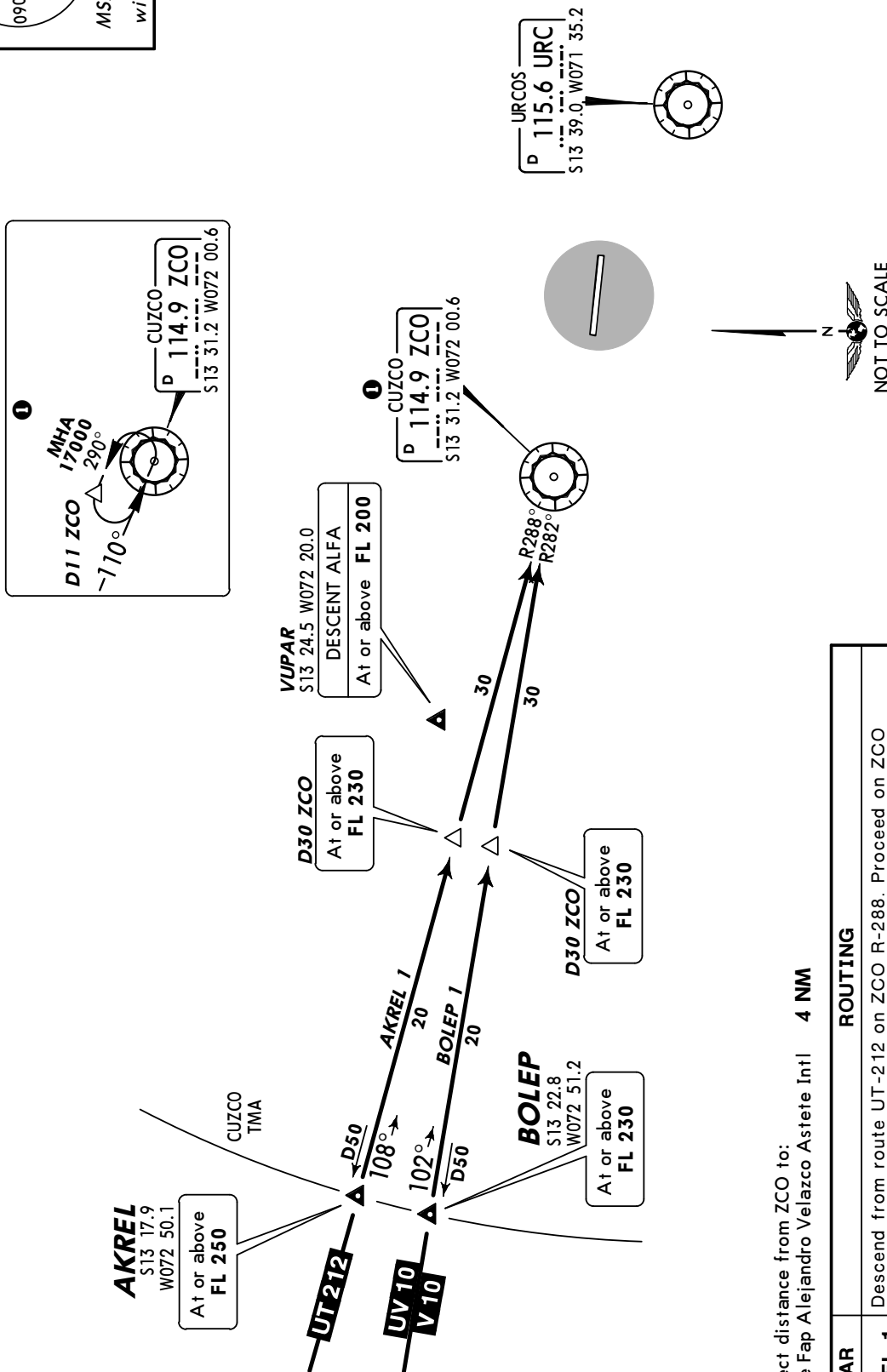
JEPPESEN
30 APR 10 **10-2**

CUZCO, PERU
STAR

*ATIS 127.0	Apt Elev 10860'	Alt Set: hPa Trans level: By ATC Trans alt: 18000' 1. In case of DME failure, the minimum holding altitude will be FL 230 and the outbound leg 1.5 minutes. 2. Aircraft on AKREL 1 or BOLEP 1 cleared by ATC for Descent ALFA, cross D30 ZCO, according to area chart at or above FL 230 and proceed direct to VUPAR at or above FL 200.
-----------------------	---------------------------	--



AKREL 1, BOLEP 1 ARRIVALS
SPEED: MAX 250 KT



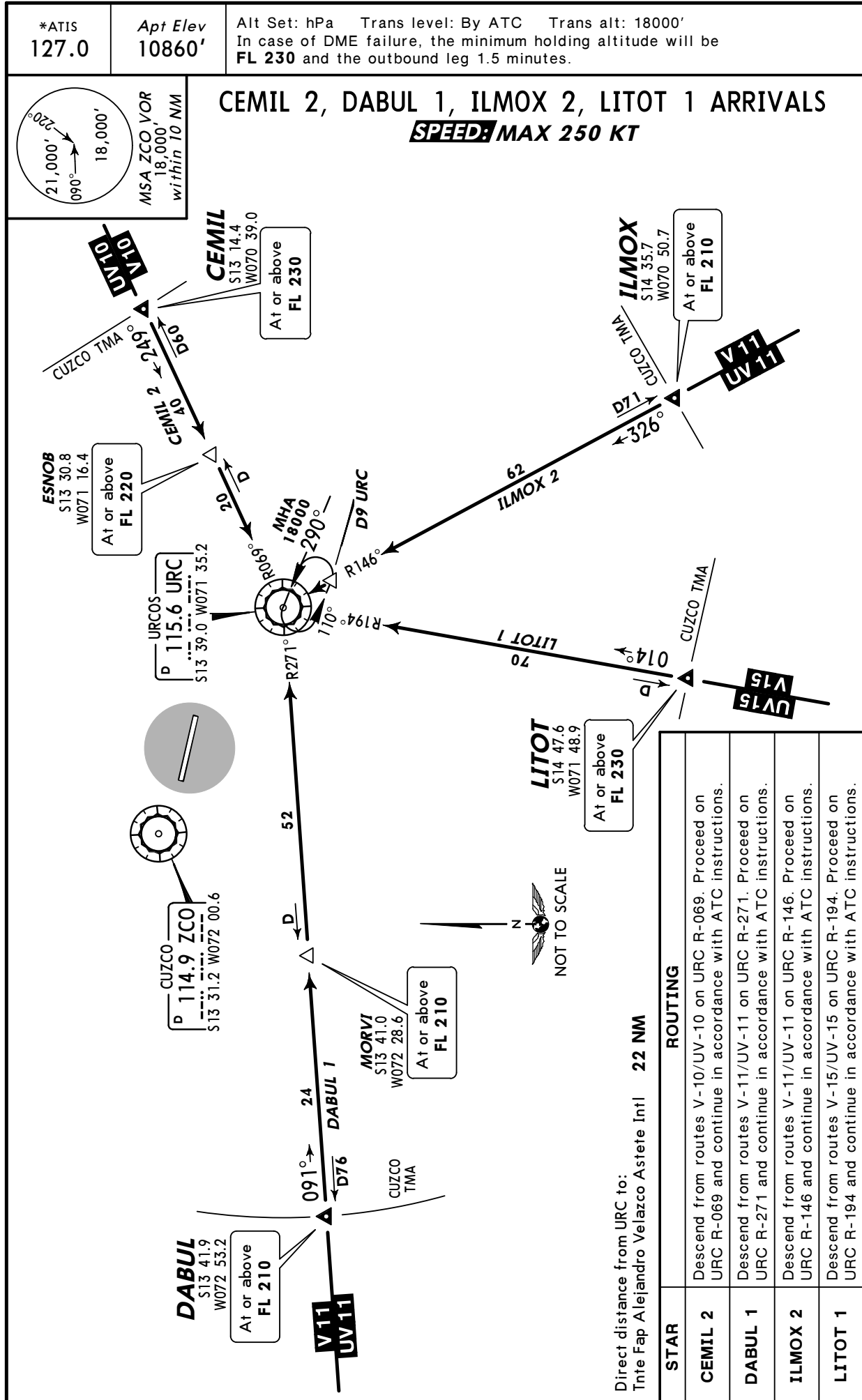
Direct distance from ZCO to:
Tnte Fap Alejandro Velazco Astete Intl **4 NM**

STAR	ROUTING
AKREL 1	Descend from route UT-212 on ZCO R-288. Proceed on ZCO R-288 and continue in accordance with ATC instructions.
BOLEP 1	Descend from routes V-10/UV-10 on ZCO R-282. Proceed on ZCO R-282 and continue in accordance with ATC instructions.

SPZO/CUZ
Tnte FAP ALEJANDRO
VELAZCO ASTETE INTL

JEPPESEN
30 APR 10 **10-2A**

CUZCO, PERU
STAR

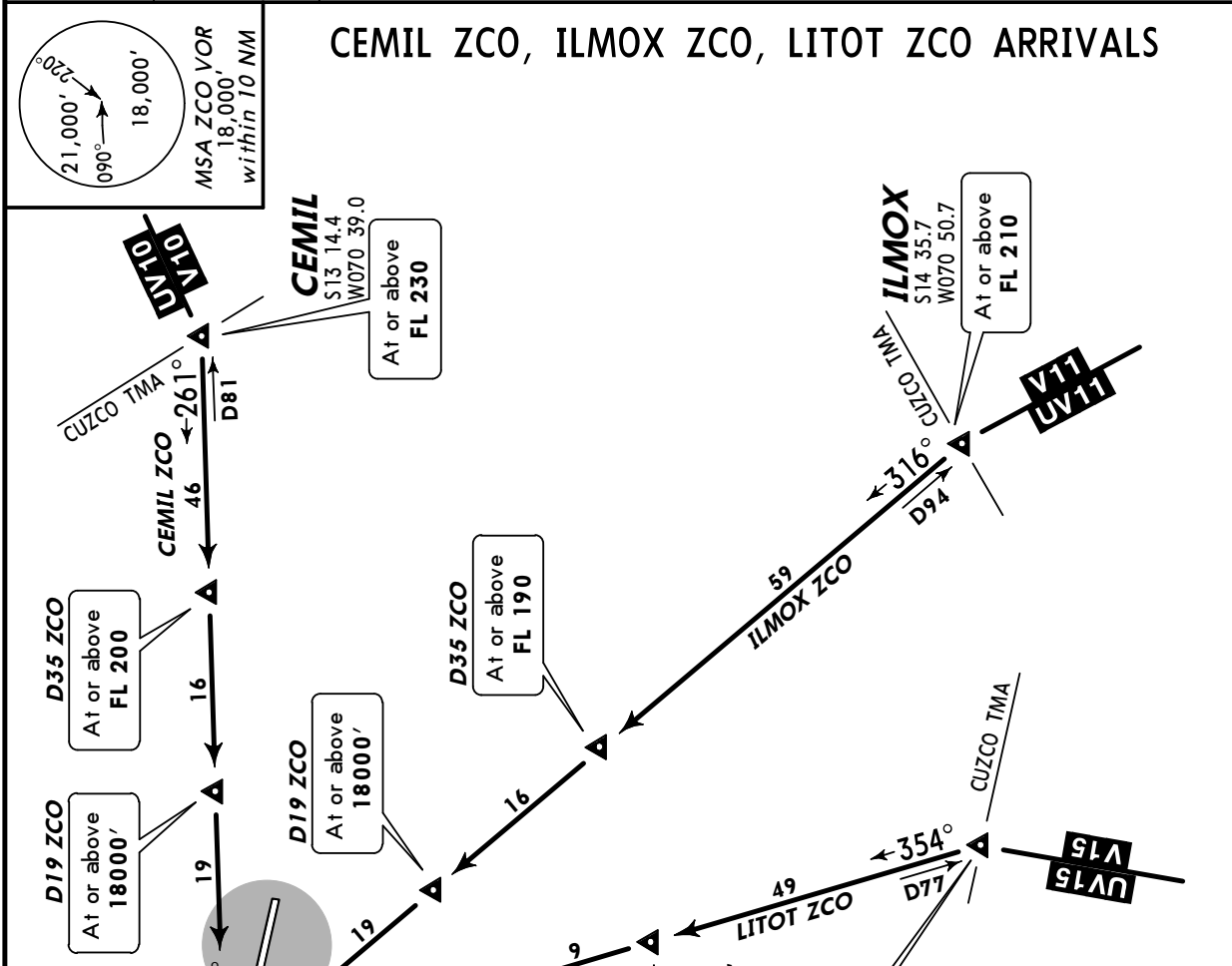


SPZO/CUZ
TNT E FAP ALEJANDRO
VELAZCO ASTETE INTL

JEPPESEN
23 SEP 05 **(10-2A-1)**

CUZCO, PERU
STAR

*ATIS 127.0	Apt Elev 10860'	Alt Set: hPa Trans level: By ATC Trans alt: 18000' 1. In case of DME failure, the minimum holding altitude will be FL 230 and the outbound leg 1.5 minutes. 2. For arrival from Lima refer to SPZO 10-2.
-----------------------	---------------------------	---



**ALTERNATE ARRIVALS
IN CASE OF FAILURE OF URC VOR.
EFFECTIVE BY NOTAM.**

Direct distance from ZCO to:
Tnte Fap Alejandro Velazco Astete Intl 4 NM

STAR	ROUTING
CEMIL ZCO	Descend from V-10/UV-10 on ZCO R-081 (heading 261°). Proceed to ZCO and continue in accordance with ATC instructions.
ILMOX ZCO	Descend from V-11/UV-11 on ZCO R-136. Proceed on ZCO R-136 to ZCO and continue in accordance with ATC instructions.
LITOT ZCO	Descend from V-15/UV-15 on ZCO R-174. Proceed on ZCO R-174 to ZCO and continue in accordance with ATC instructions.

SPZO/CUZ
TNT E FAP ALEJANDRO
VELAZCO ASTETE INTL

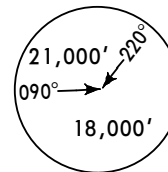
JEPPesen

31 DEC 04 **10-3**

CUZCO, PERU
SID

Apt Elev
10860'

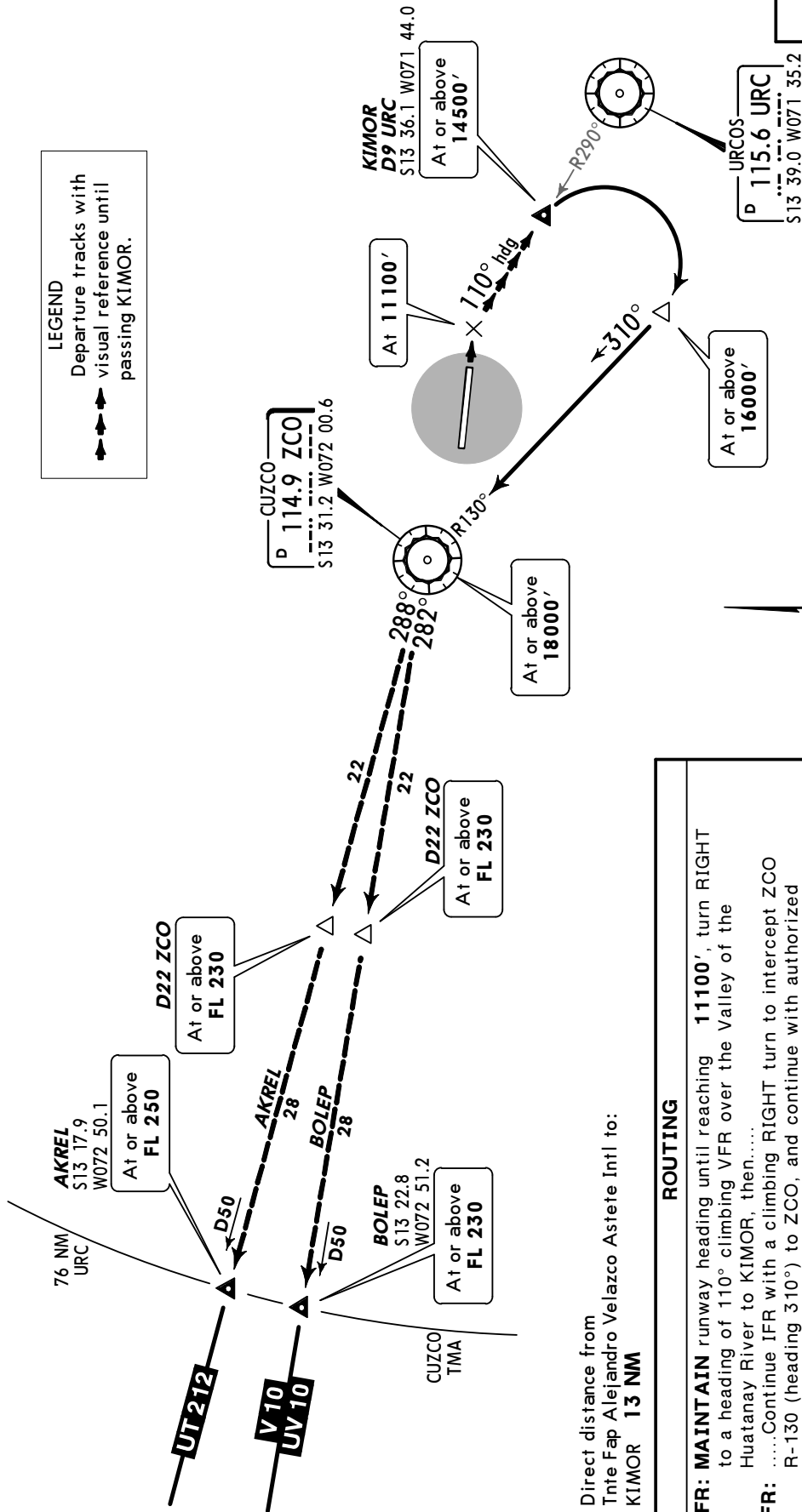
Trans level: By ATC Trans alt: 18000'



MSA ZCO VOR
18,000'
within 10 NM

CUZCO 1 DEPARTURE

LEGEND
Departure tracks with
visual reference until
passing KIMOR.



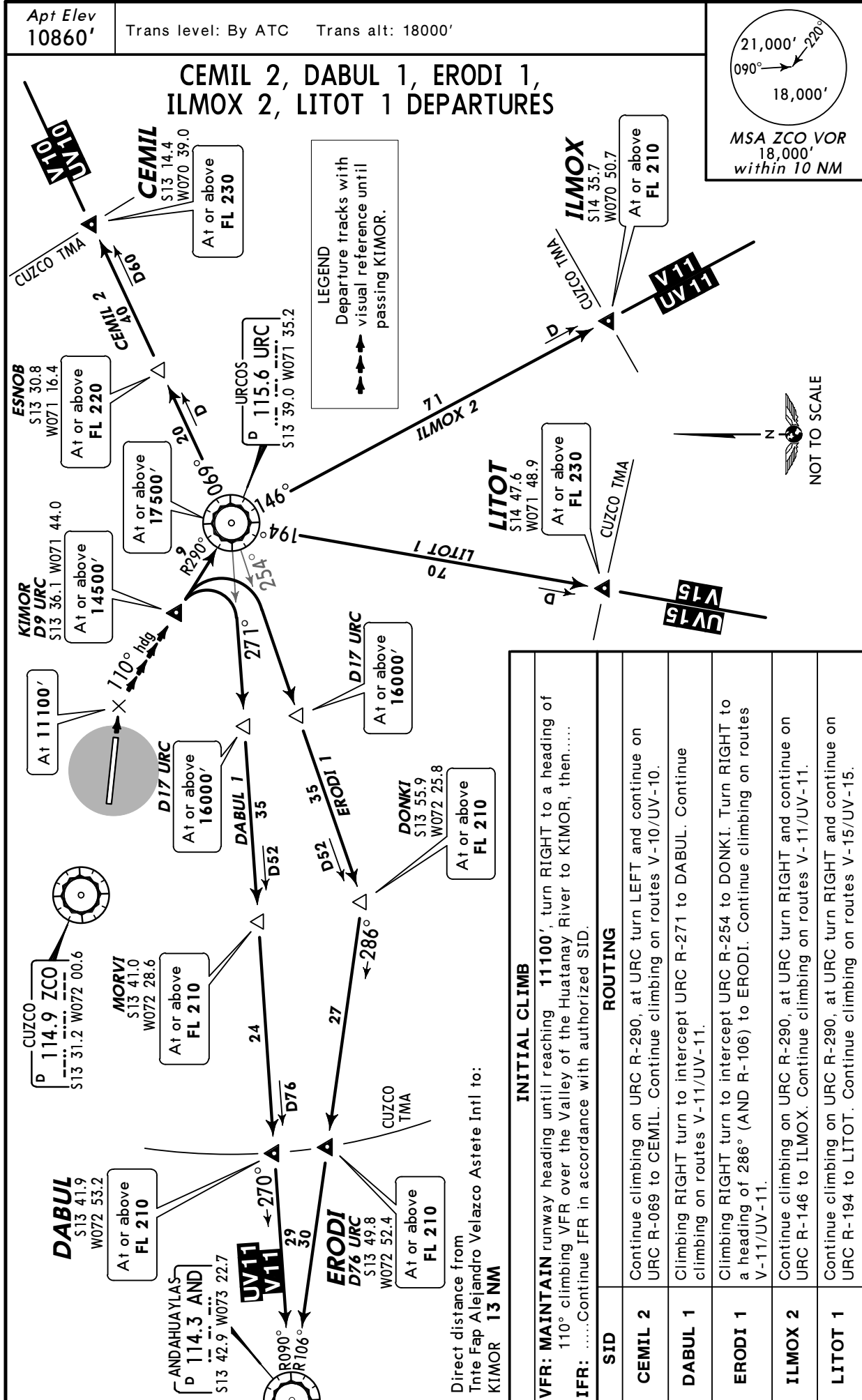
Direct distance from
Tnte Fap Alejandro Velazco Astete Intl to:
KIMOR **13 NM**

ROUTING	
VFR:	MAINTAIN runway heading until reaching 11100' , turn RIGHT to a heading of 110° climbing VFR over the Valley of the Huatanay River to KIMOR, then.....
IFR:Continue IFR with a climbing RIGHT turn to intercept ZCO R-130 (heading 310°) to ZCO, and continue with authorized transition.
TRANSITIONS	
AKREL	Climbing LEFT turn to proceed on ZCO R-288 to AKREL. Continue climbing on route UT-212.
BOLEP	Climbing LEFT turn to proceed on ZCO R-282 to BOLEP. Continue climbing on routes V-10/UV-10.

SPZO/ CUZ
TnTE FAP ALEJANDRO
VELAZCO ASTETE INTL

JEPPesen
31 DEC 04 **(10-3A)**

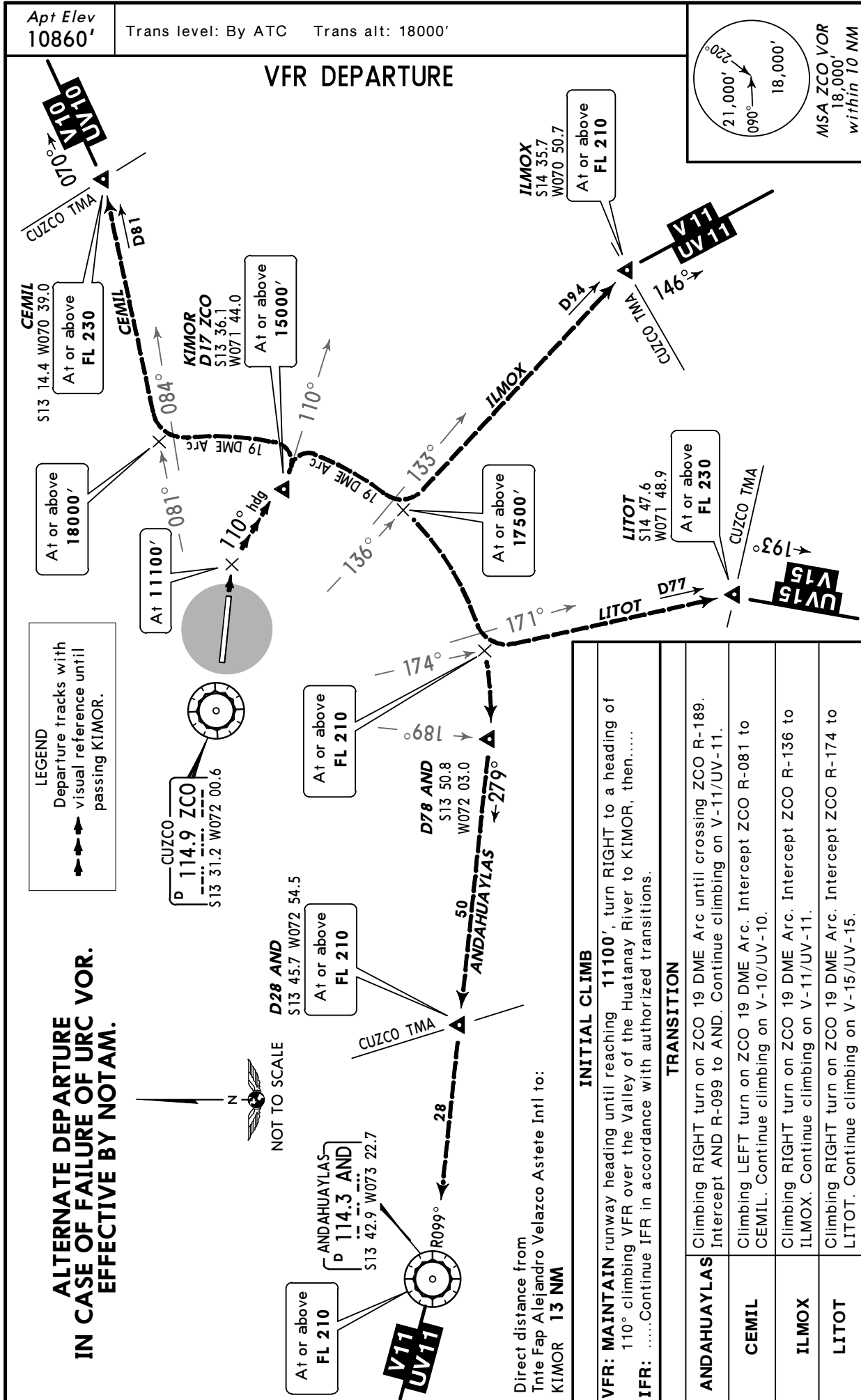
CUZCO, PERU
SID



SPZO/CUZ
Tnte Fap ALEJANDRO
VELAZCO ASTETE INTL

JEPPesen
23 SEP 05 **(10-3A-1)**

CUZCO, PERU
SID



SPZO/CUZ

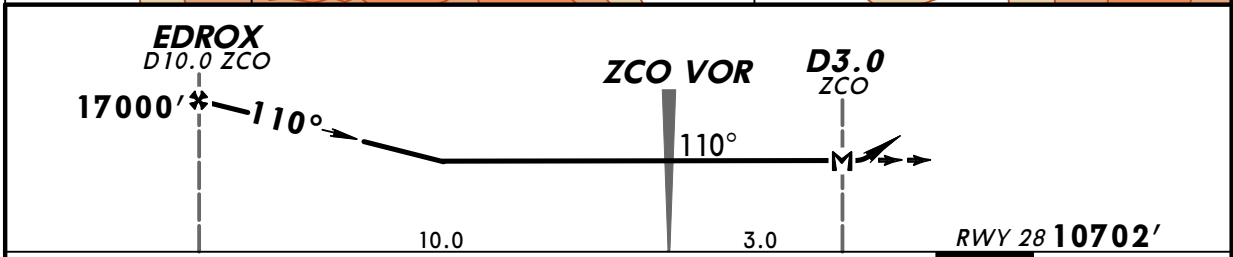
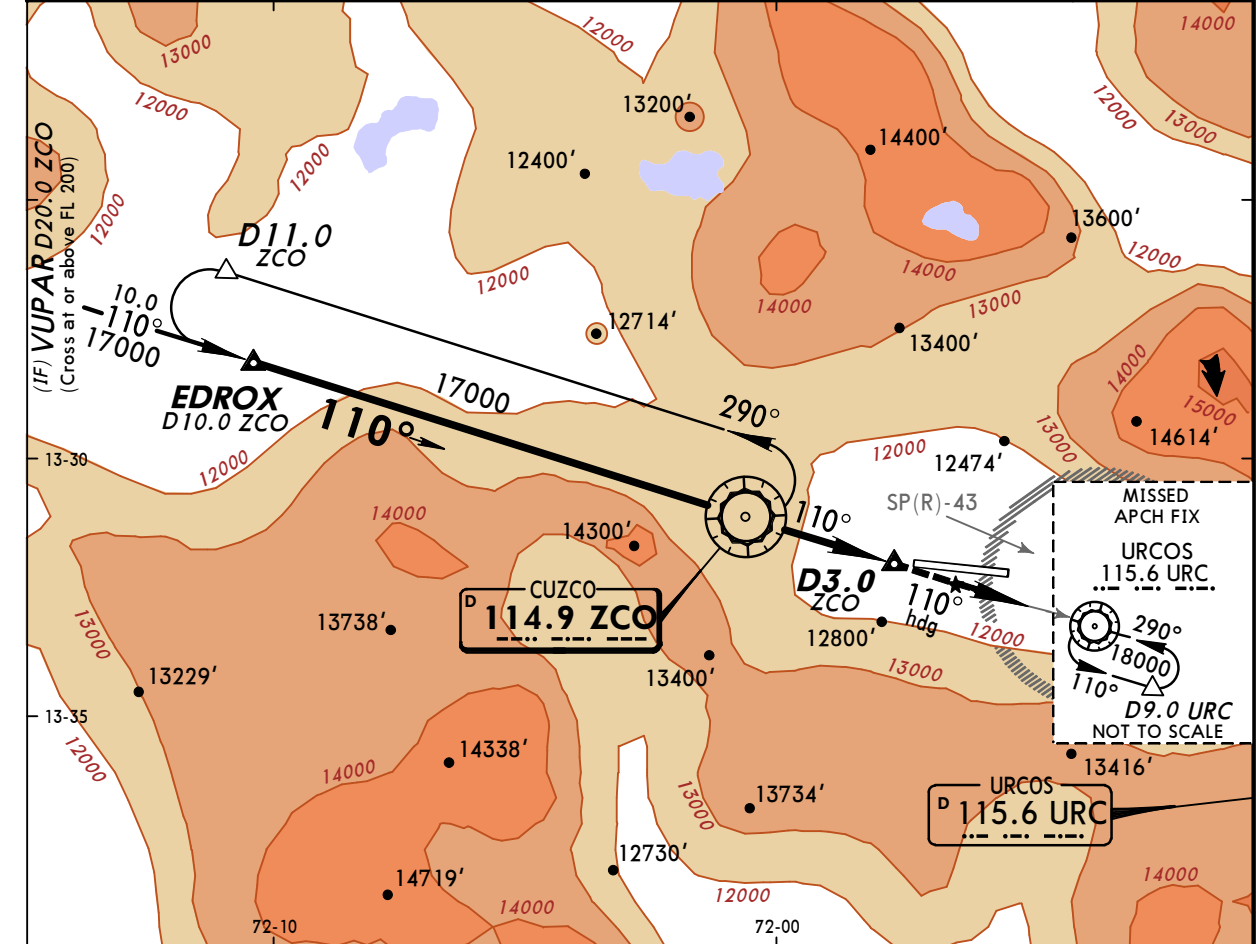
JEPPESEN
26 AUG 05 (13-1)

CUZCO, PERU
DESCENT ALPHA

TNTE FAP ALEJANDRO VELAZCO ASTETE

VOR DME (CIRCLING) Rwy 28

*ATIS 127.0		*CUZCO Approach 120.6		*CUZCO Tower 118.1		*Ground 121.9	
VOR ZCO 114.9	Final Apch Crs 110°	Minimum Alt EDROX 17000' (6300')	MDA(H) Refer to Minimums	Apt Elev 10860'	Rwy 28 10702'		
MISSED APCH: Climb on 110° heading (R-110 ZCO/R-290 URC) and cross URC VOR at or above 18000' and hold.							MSA ZCO VOR 18,000' within 10 NM
Alt Set: hPa		Rwy Elev: 335 hPa		Trans level: By ATC		Trans alt: 18000'	
1. DME required. 2. Procedure not authorized at night. 3. Max IAS below FL 230 is 220 Kts.							



Gnd Speed-Kts	70	90	100	120	140	160	PAPI-L	↑ on 110° hdg
Rate of descent on final 5.0%	354	456	506	608	709	810		
MAP at D3.0 ZCO								

		CEILING REQUIRED	
		CIRCLE-TO-LAND Circling prohibited for Rwy 10 Circling not authorized north of airport	
	DAY	NIGHT	
Max Kts	MDA(H)	CEIL-VIS	
A 100	14500' (3800')	1200m - 8.0 km	NA
B 135			
C 180			
D 205			

CHANGES: ATIS added.

SPZO/CUZ
Apt Elev **10860'**
S13 32.2 W071 56.3

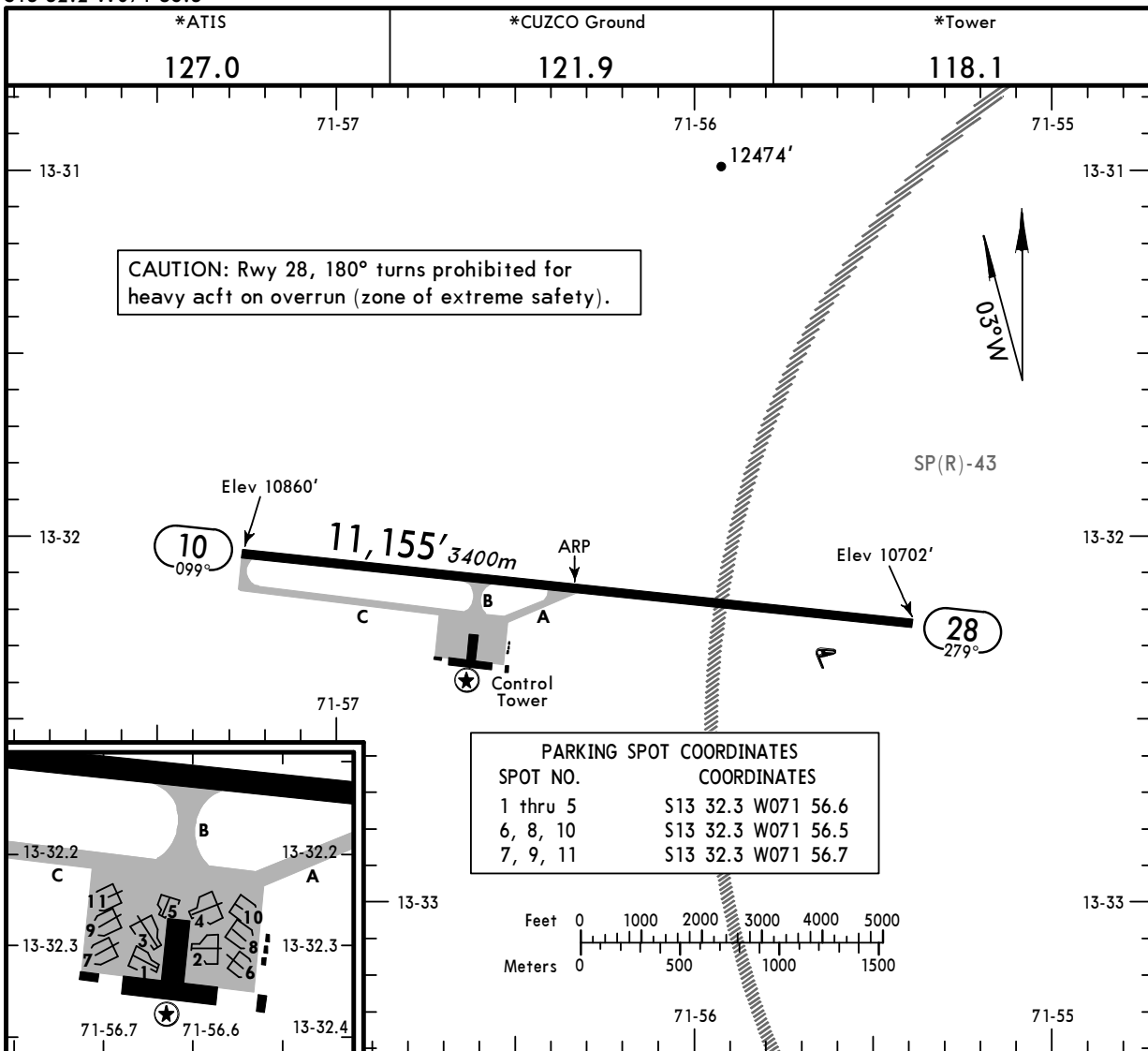
JEPPESEN

26 AUG 05

(13-1)

TNTE FAP ALEJANDRO VELAZCO ASTETE

CUZCO, PERU



ADDITIONAL RUNWAY INFORMATION

RWY	USABLE LENGTHS	WIDTH
10		148'
28	PAPI-L (angle 3.0°) RVR	45m

SPZO/CUZ

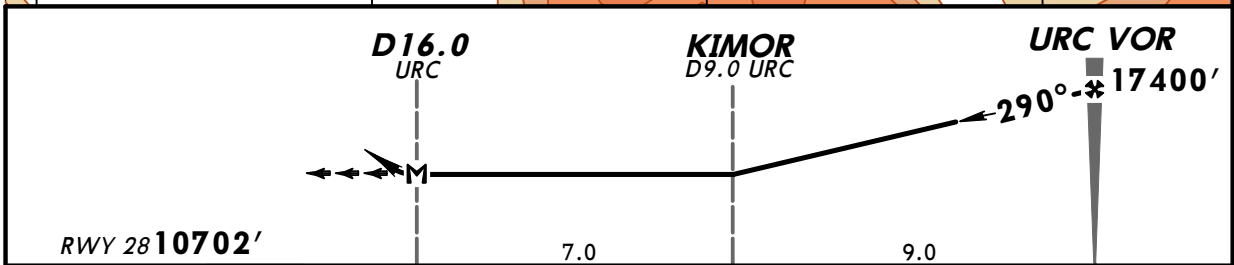
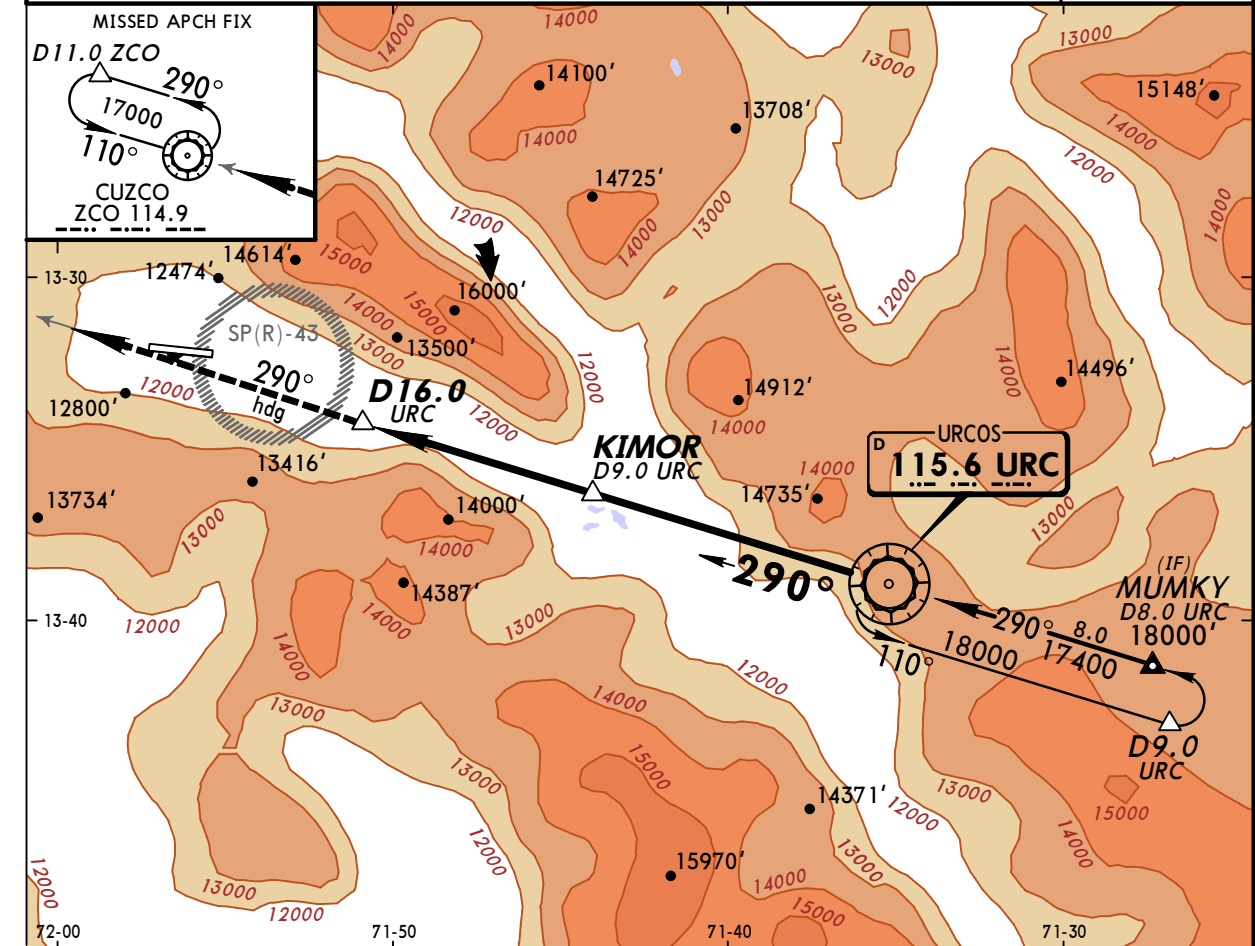
JEPPESEN
 26 AUG 05 (13-2)

CUZCO, PERU
DESCENT BRAVO

TNTE FAP ALEJANDRO VELAZCO ASTETE

VOR DME (CIRCLING) Rwy 28

*ATIS 127.0		*CUZCO Approach 120.6		*CUZCO Tower 118.1		*Ground 121.9	
VOR URC 115.6	Final Apch Crs 290°	Minimum Alt URC VOR 17400' (6700')		MDA(H) Refer to Minimums	Apt Elev 10860' Rwy 28 10702'		
MISSED APCH: Climb on 290° heading (R-110 ZCO) and cross ZCO VOR at or above 16000' and hold at ZCO VOR at or above 17000'.							
Alt Set: hPa		Rwy Elev: 335 hPa		Trans level: By ATC		Trans alt: 18000'	
1. DME required. 2. Max IAS below FL 230 is 220 Kts.							MSA URC VOR 19,000' within 15 NM



Gnd Speed-Kts	70	90	100	120	140	160	PAPI-L	
Rate of descent of final 5.3%	376	483	537	644	751	859		
MAP at D16.0 URC								

PANS OPS			
Max Kts	DAY		NIGHT
	MDA(H)	CEIL-VIS	
A 100	14500' (3800')	1200m - 8.0 km	
B 135			
C 180			
D 205			

CHANGES: ATIS added, minimums.