



# X-Plane 11 Flight Management System (FMS)

Author: Julian Lockwood ([julian@x-plane.com](mailto:julian@x-plane.com))

Copyright: Laminar Research 2017

## Disclaimer

The information contained in this document is for **simulation use only**, within the X-Plane flight simulator. This document is not subject to revision, and has not been checked for accuracy. This document is intended for entertainment only, and may not to be used in situations involving real-life aircraft, or real-life aviation.

This document may be copied and distributed by Laminar Research customers for entertainment only.

Flight Management Systems.....	4
The X-Plane 11 Flight Management System .....	5
The “Pop-Up” CDU .....	5
Invoking, moving, sizing, and closing the “Pop-Up” CDU .....	5
Components of the CDU .....	7
Programming a Flight Plan .....	9
Initializing the CDU.....	9
Invoking the Flight Plan Page .....	9
Programming the Flight Plan Origin.....	10
Programming the Flight Plan Destination.....	10
Programming the Flight Number .....	10
Executing the Flight Plan segment.....	11
Programming the Departure.....	12
Selecting a Standard Instrument Departure (SID) .....	13
Selecting a Standard Instrument Departure (SID) Transition .....	13
Programming the route segment .....	14
Programming the Arrival.....	15
Selecting a Standard Instrument Arrival (STAR) .....	15
Selecting an Instrument Approach .....	15
Selecting an Approach Transition .....	16
Programming Fixes.....	17
Programming a FIX for Standard Instrument Departure (VTU6). .....	18
Programming a FIX for Standard Instrument Arrival (BSR3).....	20
VNAV .....	21
VNAV – Programming a Climb Transition Altitude .....	21
VNAV – Programming Climb and Descent Speed Restrictions .....	22
VNAV - Programming a Cruise Altitude. ....	23
VNAV - Programming a Target Speed .....	23
VNAV - Programming a Vertical Path Angle (VPA).....	24
Flight Plan Discontinuities.....	25
Inserting waypoints into an active Flight Plan .....	27
Deleting waypoints from an active Flight Plan .....	28
Direct To Waypoint .....	29

Resetting the Flight Plan .....	30
Stepping through your route .....	31
Loading a (saved) Flight Plan.....	32
Invoking the Route Menu Page.....	32
Saving a Flight Plan .....	34
Invoking the Route Menu Page.....	34
Deleting a Flight Plan .....	36
Autopilot Operations .....	37
Appendix .....	38
VENTURA SIX (VTU6) DEPARTURE plate .....	38
BIG SUR THREE (BSR3) ARRIVAL plate .....	39

# Flight Management Systems



A Flight Management System (FMS) is a centralized computer system used in airliners, and other high-performance aircraft, to manage many of the aircraft systems, including (but not limited to) the flight plan.

Contemporary airliners rely on the FMS to automate a wide-variety of tasks, previously performed by navigators and flight engineers. The presence of an FMS reduces the workload in the cockpit, allowing the aircraft to be operated by (usually) just two crew-members.

To accomplish its assigned tasks, an FMS will interface with many aircraft systems, including engine, fuel, hydraulic, electrical, and navigation devices such as GPS, the on-board Inertial Navigation System, and the "Nav" radios.

A Flight Management System is an integration of several components, including:

- ✓ Control Display Unit (CDU)

A small screen and touch-keypad that provides the interface through which the pilot operates the FMS.

- ✓ Flight Management Computer

The computer hardware and software needed to run the system. This is not visible to the pilot in the cockpit, and is usually located elsewhere in the aircraft.

- ✓ Multi-Function Display (MFD)

One or more electronic displays (usually CRT or LCD) that provide the pilot with navigation progress, engine performance, and aircraft system information (depending on the mode selected).

# The X-Plane 11 Flight Management System

The Laminar Research / X-Plane 11 FMS resembles a system built by Collins and found in regional airliners, and is similar in operation to the one used in Boeing aircraft, including the 737 (illustrated in this manual).

Rival systems are built by Honeywell and Thales for use in Boeing and Airbus aircraft. Despite differences, both systems perform many of the same functions.

Due to the immense complexity of a real-life Flight Management System, the version modelled in X-Plane 11 is simplified, and does not support every capability. However, the functions necessary to program and execute a flight plan are present, including the use of published arrival and departure procedures (SIDs and STARs) and instrument approaches.

## The “Pop-Up” CDU

For convenience, a pop-up CDU is provided in every X-Plane default aircraft that features a Flight Management System. This is a 2D panel that can be moved and sized per the needs of the pilot. For the purposes of this guide, we will present the pop-up CDU only. However, commands may also be input using the CDU panel built into the 3D cockpit.

## Invoking, moving, sizing, and closing the “Pop-Up” CDU

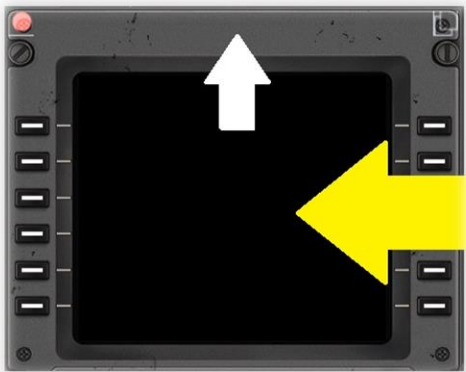
### Invoking the pop-up CDU



To invoke the pop-up CDU panel, position and click the mouse-pointer anywhere inside the **DISPLAY** area of the CDU panel in the 3D cockpit.

See highlighted area in image to left.

### Moving the pop-up CDU



To move the pop-up CDU panel to the desired location on your computer screen, first place the mouse-pointer anywhere on the outer-frame. The top-center is recommended, as shown here by the white arrow.

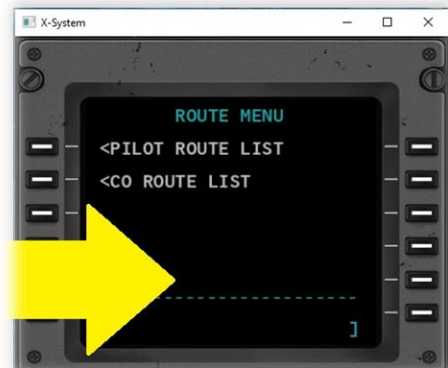
Now click and drag the pop-up CDU panel to the desired location on your computer screen.

### Re-sizing the pop-up CDU



Place the mouse-pointer at the top-center of the CDU frame. Two click-spots will appear. The click-spot in the **UPPER-RIGHT** of the CDU frame invokes "Window" mode.

In this mode, the CDU panel can be re-sized by dragging the window frame - in the same manner as any other window supported by your operating system.



### Closing the pop-up CDU



Place the mouse-pointer at the top-center of the CDU frame. Two click-spots will appear.

The (red) click-spot in the **UPPER-LEFT** of the CDU frame closes the pop-up.

# Components of the CDU

The Control Display Unit (CDU) provides the interface between the pilot and the Flight Management Computer (FMC). It consists of a display panel, and a series of keys that are grouped together according to their function.



## Display

This panel provides a simple output display to the pilot, allowing him to program the unit, make commands, and select available options.



## Scratch Pad

This area of the CDU Display is used for Key Pad input.

Inputs made by the pilot are initially displayed here, before a Line Select Key is chosen, to move this text to the appropriate line of the CDU Display (above the scratch pad).



## Line Select Keys

These keys are used to make selections from the options provided alongside them, in the CDU Display.

The keys on the left-side of the unit align with the options on the left-side of the display, and vice-versa.



## Key Pad

Used to input text into the scratch pad area on the CDU display.



**Page Keys**

These keys are used to select the page presented in the Display Area.

The primary functions of the CDU are grouped by "Page". This simplifies the presentation, and provides a logical work-flow to the pilot.



**Exec Key**

This key is used to activate a flight plan, or a segment of a flight plan, or to commit changes to an active flight plan.

When the light bar (above the key) is illuminated, this key must be pressed to commit changes that have been input by the pilot, and are currently pending.



**Clear Key**

This key clears text currently displayed in the "Scratch Pad".



# Programming a Flight Plan

In this section of the guide, the pilot will program the CDU with a manually input flight plan.

The flight plan used in this example originates at KLAX (Los Angeles International), and terminates at KSFO (San Francisco International).

We will depart runway 25R at KLAX, and use the VTU5 Standard Instrument Departure (SID), with the RZS Transition waypoint.

The route-segment of the flight plan will be via the "BSR" VOR/DME.

We will arrive runway 28R at KSFO, and use the BSR3 Standard Instrument Arrival (STAR).

The full route is as follows:

**KLAX, VTU5, RZS, BSR, BSR3, KSFO**

## Important

Flight plan waypoints and procedures change over time. The sample flight plan used here may no longer be current, and some of these waypoints may not be available for selection during your flight. Therefore it is not recommended you attempt to duplicate these steps in X-Plane - but instead use the examples below as guidelines for inputting and managing your own flight plan.

Loading a previously-saved flight-plan is discussed later in this guide, in the section [Loading a \(saved\) Flight Plan](#).

## Initializing the CDU

Boeing CDUs feature an "INIT REF" or "POS INIT" key that is used to initialize the Flight Management System at the start of a new flight. This initialization process includes the alignment of the Inertial Navigation System (INS), the computation of V-Speeds, and several other factors that relate to the aircraft loading and performance. These features are highly specific to the particular type of aircraft flown, and therefore not available in the X-Plane 11 FMS, which can be used with every aircraft. Therefore, the pilot begins programming the CDU at the Flight Plan Page.

## Invoking the Flight Plan Page



Click the **FPLN** key to invoke the Flight Plan Page.

This page is at the top of the Flight Plan hierarchy, and is used to input the:

- ✓ Origin and destination airports
- ✓ The flight number

and

- An optional "Company Route" (saved flight plan)
- An optional "Via" airway designator (with associated "To" exit point).

The use of an airway designator saves the pilot from the need to manually input the individual waypoints along that segment of the route. The exit waypoint defines the end of that particular segment.

For more information regarding "Airways", see:

[https://en.wikipedia.org/wiki/Airway\\_\(aviation\)](https://en.wikipedia.org/wiki/Airway_(aviation))

**Hint:** Always use the "CLR" key to remove any existing text in the "Scratch Pad" before inputting new data.

## Programming the Flight Plan Origin

Using the CDU Key Pad, input the ICAO code of the originating airport, which is this instance is **KLAX**.

The text will appear in the "Scratch Pad".

Click the Line Select Key (highlighted in red in the example to the right) to cut and paste **KLAX** from the Scratch Pad to the ORIGIN data field (in the Display Area).



## Programming the Flight Plan Destination

Using the CDU Key Pad, input the ICAO code of the destination airport, which is this instance is **KSFO**.

The text will appear in the "Scratch Pad".

Click the Line Select Key (highlighted in red in the example to the right) to cut and paste **KSFO** from the Scratch Pad to the DEST data field (in the Display Area).



## Programming the Flight Number

Use the CDU Key Pad to input the flight number. For the purposes of this example, we will use **AA123**.

The text will appear in the "Scratch Pad".

Click the Line Select Key (highlighted in red in the example to the right) to cut and paste **AA123** from the Scratch Pad to the FLT NO data field (in the Display Area).



## Executing the Flight Plan segment



The **EXEC** button is illuminated to indicate that your instructions are ready to be executed.

Click the **EXEC** button to activate this segment of the flight plan.

## Programming the Departure

Click the **DEP ARR** key to invoke the "Departures and Arrival Index Page".

Click the Line Select Key (highlighted in red in the example to the right) to invoke the "Departures Page".



Use the **NEXT PAGE** key to locate the desired runway. In this example, we will be using **25R**.

Click the Line Select Key (highlighted in red in the example to the right) to select this.



## Selecting a Standard Instrument Departure (SID)

Note: See Appendix in this guide for the VENTURA SIX (VTU6) DEPARTURE plate.

The Standard Instrument Procedures (SIDs) that utilize the (previously) selected runway (25R) will be displayed.

Use the NEXT PAGE key to locate the desired SID (VTU6).

Click the Line Select Key (highlighted in red in the example to the right) to select this.



## Selecting a Standard Instrument Departure (SID) Transition

The available transition waypoints for the (previously) selected SID are now displayed.

Use the NEXT PAGE key (if needed) to locate the desired Transition (RZS).

Click the Line Select Key (highlighted in red in the example to the right) to select this.

Click the EXEC button to execute the instruction.



## Programming the route segment

The route segment is that portion of the flight plan that exists between the departure (waypoints) and the arrival (waypoints).

To begin programming the route segment of the flight plan, click the **FPLN** button, followed by **NEXT PAGE**.



In our example flight plan, the route segment consists of just a single waypoint – **BSR**. A more complex flight plan would probably feature multiple waypoints in the route segment, and the steps described here would be repeated for each waypoint.

Using the CDU Key Pad, input the waypoint identifier **BSR**. The text will appear in the “Scratch Pad”.

Click the Line Select Key (highlighted in red in the example to the right). This is the next (unused) waypoint in the flight plan.



There are two waypoints that exist with the **BSR** identifier. Both are VOR transmitters.

The CDU displays both, because it is unable to determine which is the desired selection.

Click the Line Select Key (highlighted in red in the example to the right), to select the first of the two **BSR** VOR waypoints. This is the one we require. *Hint: It will usually be the closest one!*

Click the **EXEC** button to execute the instruction.

## Programming the Arrival

Click the **DEP ARR** key to invoke the “Departures and Arrival Index Page”.

Click the Line Select Key (highlighted in red in the example to the right) to invoke the “Arrivals Page” (for **KSFO**).



## Selecting a Standard Instrument Arrival (STAR)

Note: See Appendix in this guide for the BIG SUR THREE (BSR3) ARRIVAL plate.

Use the **NEXT PAGE** key (if needed) to locate the desired STAR.

In this example, we will be using **BSR3**.



## Selecting an Instrument Approach

Click the Line Select Key (highlighted in red in the example to the right) to select the desired instrument approach.

Only approaches associated with the chosen STAR (**BSR3**) will be displayed.

In this example, we will be using the ILS approach to runway **28R**.



## Selecting an Approach Transition

The available transition routes or initial approach fixes for the previously selected instrument approach are now displayed.

Use the **NEXT PAGE** key (if needed) to locate the desired Transition (**MENLO**).

Click the Line Select Key (highlighted in red in the example to the right) to select this.

Click the **EXEC** button to execute the instruction.





## Programming Fixes

Sometimes SIDS and STARS require the pilot to input a FIX. Fixes are positions that are derived relative to one or more other waypoints. Examples would be:

- The intersection of two VOR radials.
- A specific distance from a given VOR, on a given radial.

In this tutorial, the departure SID (VTU6) and arrival STAR (BSR3) **both** require the CDU to be programmed with a FIX.

## Programming a FIX for Standard Instrument Departure (VTU6).

Standard Instrument Departure **VTU6** requires that the pilot input the Santa Monica VOR (**SMO**) as a FIX. The fix is reached when crossing the 154 radial from this VOR.

**Note:** See Appendix in this guide for the VENTURA SIX (VTU6) DEPARTURE plate.

Click the **FIX** key to invoke the "FIX INFO Page 1/2".

Page 1 of 2 is now displayed, and we are ready to input the fix associated with the Standard Instrument Departure procedure.



Input the name of the navigation aid that defines the fix. This is the Santa Monica VOR, which has the identifier **SMO**.

Click the Line Select Key (highlighted in red in the example to the right) to move this from the scratch pad to the FIX Reference line.



There are multiple waypoints with the **SMO** identifier.

Click the Line Select Key (highlighted in red in the example to the right) to select the desired waypoint (the closest one).





Input the desired radial (154) into the scratch pad.

Click the Line Select Key (highlighted in the example to the left) to place this in the "Radial Crossing" line.

## Programming a FIX for Standard Instrument Arrival (BSR3).

Standard Instrument Arrival **BSR3** requires that the pilot input the Woodside VOR (**OSI**) as a FIX. The fix is reached when crossing the **038** radial from this VOR.

**Note:** See Appendix in this guide for the **BIG SUR THREE (BSR3) ARRIVAL** plate.

Click the **NEXT PAGE** key to invoke the "FIX INFO Page 2/2".

Page 2 of 2 is now displayed, and we are ready to input the fix associated with the Standard Instrument Arrival procedure.



Input the name of the navigation aid that defines the fix. This is the Woodside VOR, which has the identifier **OSI**.

Click the Line Select Key (highlighted in red in the example to the right) to move this from the scratch pad to the FIX Reference line.



Input the desired radial (**038**) into the scratch pad.

Click the Line Select Key (highlighted in the example to the left) to place this in the "Radial Crossing" line.



## VNAV

There are three VNAV pages - used to define the vertical navigation profile for the climb, cruise and descent phases of your flight.

To invoke the VNAV pages, click the **FPLN** button, and then click the **VNAV** Line Select Key (highlighted in red in the example to the right) to select this.

Use the **NEXT PAGE** / **PREV PAGE** to navigate to between VNAV pages 1, 2, 3.



## VNAV – Programming a Climb Transition Altitude

The transition altitude is the published barometric altitude above sea level at which pilots climbing to their cruise level change their barometric altimeter datum from the regional pressure setting to the ISA standard pressure of 1013hPa or 29.92inHg.

In the US, this is 18,000 feet. Altitudes at, and above this point, are referred to as "Flight Levels". For example, 18,000 feet pressure altitude is "Flight Level 180".

The CDU in X-Plane 11 uses a default value of 18000 feet for the transition altitude – which applies to US airspace.

You may, however, change the transition altitude for a specific airspace that you are operating in during the ascent phase of your flight.



Use the **NEXT PAGE** / **PREV PAGE** to navigate to VNAV page 1/3.

Using the CDU Key Pad, input the transition altitude.

In this example, we will manually specify a transition altitude of 18,000 feet (even though this is already programmed by default).

Use the key pad to Input the desired altitude. The text will appear in the "Scratch Pad".

Click the Line Select Key (highlighted in red in the example to the left) to cut and paste **18000** from the Scratch Pad to the TRANS ALT data field (in the Display Area).

## VNAV – Programming Climb and Descent Speed Restrictions

During your flight, the speed is likely to be restricted at specific altitudes. For example, in US airspace the speed is normally restricted to 250 knots at, or below, 10,000 feet.



Use the **NEXT PAGE** / **PREV PAGE** to navigate to the VNAV CLIMB page 1/3 or the VNAV DESCEND page 3/3.

The CDU in X-Plane 11 uses a default speed restriction of 250 knots at 10000 feet.

You may program up to two speed restrictions.

To program a speed restriction, input this into the 'Scratch Pad' as shown in the example to the right.

Click the Line Select Key alongside the first or second speed restriction. Note that if the line is already populated, the new restriction will replace the existing restriction.

In the example to the right, two restrictions have been programmed:

- 200 knots at or below 8,000 feet
- 240 knots at or below 10,000 feet

Note: You may delete the second speed restriction if needed. Click the **DEL** key, and then the Line Select Key alongside the second speed restriction.



## VNAV - Programming a Cruise Altitude.

The cruise altitude for this flight will be 28,000 feet, or **Flight-Level 280**.

Use the **NEXT PAGE / PREV PAGE** to navigate to VNAV CRUISE page 2/3.

or

Click the **CRZ** button as a short-cut to the same page.



Input the cruise altitude into the scratch pad.

For Flight-Level 280, input just **280**.

Click the Line Select Key alongside **CRZ ALT**.



## VNAV - Programming a Target Speed

Aircraft equipped with both an auto-pilot and auto-throttle can maintain a Target Speed, provided this does not conflict with programmed Speed/Altitude restrictions.



Use the **NEXT PAGE / PREV PAGE** to navigate to VNAV DESCEND page 3/3.

Input the required Target Speed (in knots) into the 'Scratch Pad'.

Click the Line Select Key alongside **TGT SPEED** to replace this with the new value.

## VNAV - Programming a Vertical Path Angle (VPA)

The Vertical Path Angle (VPA) is the descent angle in degrees. The default value is 2.5, which means the aircraft will descend at an angle of 2.5 degrees to the horizontal. In certain circumstances, there may be a need to change this. For example, when making a steep descent due to terrain, or noise restrictions.



Use the **NEXT PAGE** / **PREV PAGE** to navigate to VNAV DESCEND page 3/3.

Input the required VPA into the 'Scratch Pad'.

Click the Line Select Key alongside the VPA to replace this with the new value.



## Flight Plan Discontinuities

Discontinuities occur when route segments within the flight plan cannot be joined together - usually due to missing or ambiguous waypoints. When this occurs, the discontinuity must be repaired, and the flight plan "stitched together". Because every discontinuity is unique to a specific flight plan, this manual cannot provide a method for solving each one. However, the example below does illustrate the basic method.

Changes to waypoints are made using the **LEGS** page.

In the example to the right, a discontinuity will be deliberately introduced into our flight plan, by deleting waypoint "BSR".



The result is a **DISCONTINUITY** in the flight plan.

Waypoints BSR and CARME are no longer present.

[See [BIG SUR THREE \(BSR3\) ARRIVAL plate](#)].



To repair the discontinuity, the missing waypoints **BSR** and **CARME** must be re-introduced into our flight plan, at the correct locations.

**BSR** is manually keyed into the 'Scratch Pad', and inserted alongside the first DISCONTINUITY.



Waypoint **BSR** is now present in the flight plan.

Waypoint **CARME** is still missing.



Waypoint **CARME** is manually keyed into the 'Scratch Pad', and inserted alongside the remaining DISCONTINUITY.



The flight plan is now correct but a DISCONTINUITY remains.

The flight plan must be 'stitched' back together by deleting the discontinuity between **CARME** and **ANJEE**.



The final DISCONTINUITY has been resolved.

Click the **EXEC** button to execute the instruction.



## Inserting waypoints into an active Flight Plan

During a flight, deviations can occur from the expected route, due to factors such as weather, traffic, and ATC instructions. Sometimes there is a need to insert a new waypoint into the plan.

Changes to waypoints are made using the **LEGS** page.

In this example, we will insert waypoint **LAX** into the flight plan, immediately prior to **VTU**.

Manually key waypoint **LAX** into the "Scratch Pad".



Click the Line Select Key alongside **VTU**.

This will insert new waypoint **LAX** immediately prior to **VTU** in the flight plan.

Stitch the flight plan back together to remove the discontinuity (see Flight Plan Discontinuities earlier in this manual).

Click the **EXEC** button to execute the instruction.



## Deleting waypoints from an active Flight Plan

During a flight, deviations can occur from the expected route, due to factors such as weather, traffic, and ATC instructions. Sometimes there is a need to delete new waypoint from the plan.

Changes to waypoints are made using the **LEGS** page.

In this example, we will delete waypoint LAX from the flight plan.

Click the DEL (Delete) Key.

Click the Line Select Key alongside waypoint LAX.



Waypoint LAX is removed.

Stitch the flight plan back together to remove the discontinuity (see Flight Plan Discontinuities earlier in this manual).

Click the **EXEC** button to execute the instruction.





## Direct To Waypoint

During a flight, deviations can occur from the expected route, due to factors such as weather, traffic, and ATC instructions. Sometimes there is a need to proceed directly to a specific waypoint in your flight plan (bypassing intermediate waypoints).

Note: The X-Plane 11 Flight Management Systems works like a Collins 4200 – you cannot execute a 'Direct-To' instruction in the LEGS page.

Direct To instructions are made using the DIR-INTC page.

In this example, we will fly direct to the VTU waypoint. This will bypass the VECTORS that are provided by ATC in our example flight plan.

Click the DIR INTC button.

Use the NEXT PAGE or PREV PAGE buttons to bring waypoint VTU into view.



Click the Line Select Key alongside VTU.

The Scratch Pad is now populated with your chosen waypoint.



If necessary, use the NEXT PAGE or PREV PAGE buttons until

<-----

is visible.



Click the Line Select Key alongside

<-----

Click the EXEC button to execute the instruction.



## Resetting the Flight Plan



To reset the flight plan, input a new ORIGIN into the 'Scratch Pad'.

Click the Line Select Key alongside **ORIGIN**.

## Stepping through your route

Before embarking on a flight, it is important to verify the programmed flight plan looks sensible, and does not contain any gaps in continuity.

This may be accomplished by stepping through each waypoint in the flight plan (using the CDU), and reconciling this with the route displayed on the Navigation Display (ND).

Using the EFIS control unit (highlighted below), rotate the “CTR” button to “Plan”. A plan-view of your route will be displayed on the two Navigation Display units on the instrument panel (also highlighted).



Using the CDU, click the **LEGS** button to invoke the “ACT LEGS” page.

Using the STEP Line Select Key, step through each of the waypoints in your flight plan, and examine the corresponding segment of the route on the Navigation Display unit (highlighted above).

Note: The third waypoint of the example flight-plan used in this guide is designated “VECTORS”. That portion of the route will depend on instructions provided by ATC - to join the VTU transition waypoint. This portion of the route will appear as a (legitimate) continuity gap in the flight plan, when viewed on the Navigation Display unit.

(Note: The EFIS MAP selector must be in PLAN mode for the STEP option to be available here)

# Loading a (saved) Flight Plan

Flight plans that have been generated previously (and saved in the appropriate format for X-Plane) may be loaded into the Flight Management System. The following file (extension) types are acceptable:

- **FLP** (compatible with aircraft for both X-Plane and other simulators, supports airways)
- **FML** (X-Plane 11 internal format, for saving your own flight plans)

## Invoking the Route Menu Page



Click the **INDEX** key to invoke the INDEX Page.

Click the **ROUTE MENU** Line Select Key (highlighted in red in the example to the left) to invoke the ROUTE MENU Page.

Click the **CO ROUTE LIST** Line Select Key (highlighted in red in the example to the right) to invoke the COMPANY ROUTE LIST Page.

Flight plans saved previously in the **OUTPUT/FMSPLANS** folder will be available for selection.







Click the Line Select Key alongside the flight plan you are loading (see example to the left).

If the desired flight plan is not displayed:

- Click the FPLN Line Select Key
- Manually input the desired filename (without the extension)
- Click the 'CO ROUTE' Line Select Key

# Saving a Flight Plan

Flight plans may be saved for use again later. A saved flight plan in X-Plane 11 uses a .fml extension, and appears in the following folder:

- X-Plane/Output/FMS Plans/

Before saving a flight plan, ensure that the EXEC button is not illuminated.

## Invoking the Route Menu Page



Click the **INDEX** key to invoke the INDEX Page.

Click the **ROUTE MENU** Line Select Key (highlighted in red in the example to the left) to invoke the ROUTE MENU Page.

Click the **CO ROUTE LIST** Line Select Key (highlighted in red in the example to the right) to invoke the CO ROUTE LIST Page.





Input the name of your flight plan (without the extension) into the 'Scratch Pad'.

Click the Line Select Key alongside:

ACT STORE  
<-----

Your route has been saved.

# Deleting a Flight Plan



To delete an existing flight plan, input a new origin airport code.

# Autopilot Operations

The Autopilot can be coupled to the Flight Management System, to follow the flight plan that was programmed earlier. Autopilot operations differ from aircraft to aircraft, and the example here applies specifically to the X-Plane 11 default Boeing 737.

The autopilot is located at the top-center of the instrument panel (highlighted below).

When the Lateral Navigation (“LNAV”) button is selected (and illuminated), the autopilot is instructed to follow the lateral component of your flight plan. When the autopilot is engaged, the aircraft will steer according to the desired ground-track.

When the Vertical Navigation (“VNAV”) button is selected (and illuminated), the autopilot is instructed to follow the vertical component of your flight plan. When the autopilot is engaged, the aircraft will ascend, or descend, to comply with the altitudes that have been programmed for the segments of your flight plan.

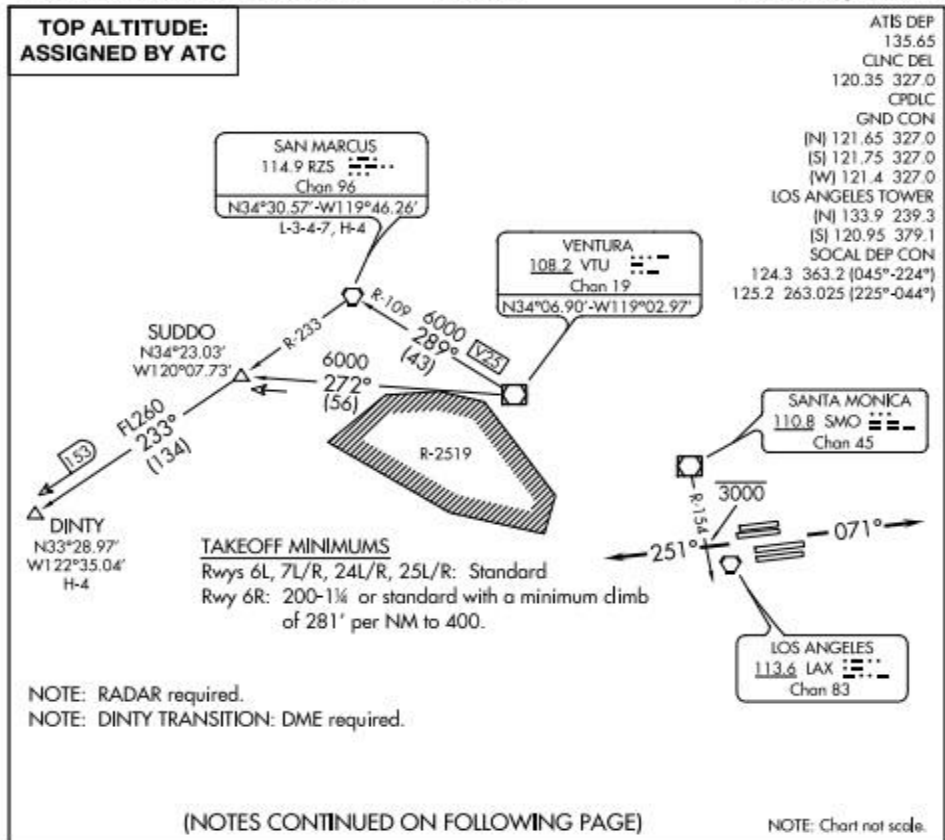
To engage the autopilot, set either of the Flight Directors to “ON”, and select (illuminate) the (“A/P Engage CMD”) button. The autopilot will take control of the aircraft, and execute the desired instructions.



# Appendix

## VENTURA SIX (VTU6) DEPARTURE plate

(VTU6.VTU) 16091  
**VENTURA SIX DEPARTURE** SL-237 (FAA)  
 LOS ANGELES INTL (LAX) LOS ANGELES, CALIFORNIA



**DEPARTURE ROUTE DESCRIPTION**

**TAKEOFF RUNWAYS 6L/R, 7L/R:** Climb on heading 071° for RADAR vectors to VTU VOR/DME, thence. . . .

**TAKEOFF RUNWAYS 24L/R, 25L/R:** Climb on heading 251° for RADAR vectors to VTU VOR/DME, cross SMO R-154 at or below 3000, thence. . . .

. . . .on (assigned transition) or (assigned route). Expect further clearance to filed flight level three minutes after departure.

**LOST COMMUNICATIONS:** If not in contact with Departure Control within five minutes after departure, climb to FL230 or filed altitude, whichever is lower. Aircraft filing FL240 or above climb to filed altitude ten minutes after departure.

**DINTY TRANSITION (VTU6.DINTY):** From over VTU VOR/DME on VTU R-272 and RZS R-233 to DINTY.

**SAN MARCUS TRANSITION (VTU6.RZS):** From over VTU VOR/DME on VTU R-289 and RZS R-109 to RZS VORTAC.

**VENTURA SIX DEPARTURE** LOS ANGELES, CALIFORNIA  
 (VTU6.VTU) 04FEB16 LOS ANGELES INTL (LAX)

**BIG SUR THREE (BSR3) ARRIVAL plate**

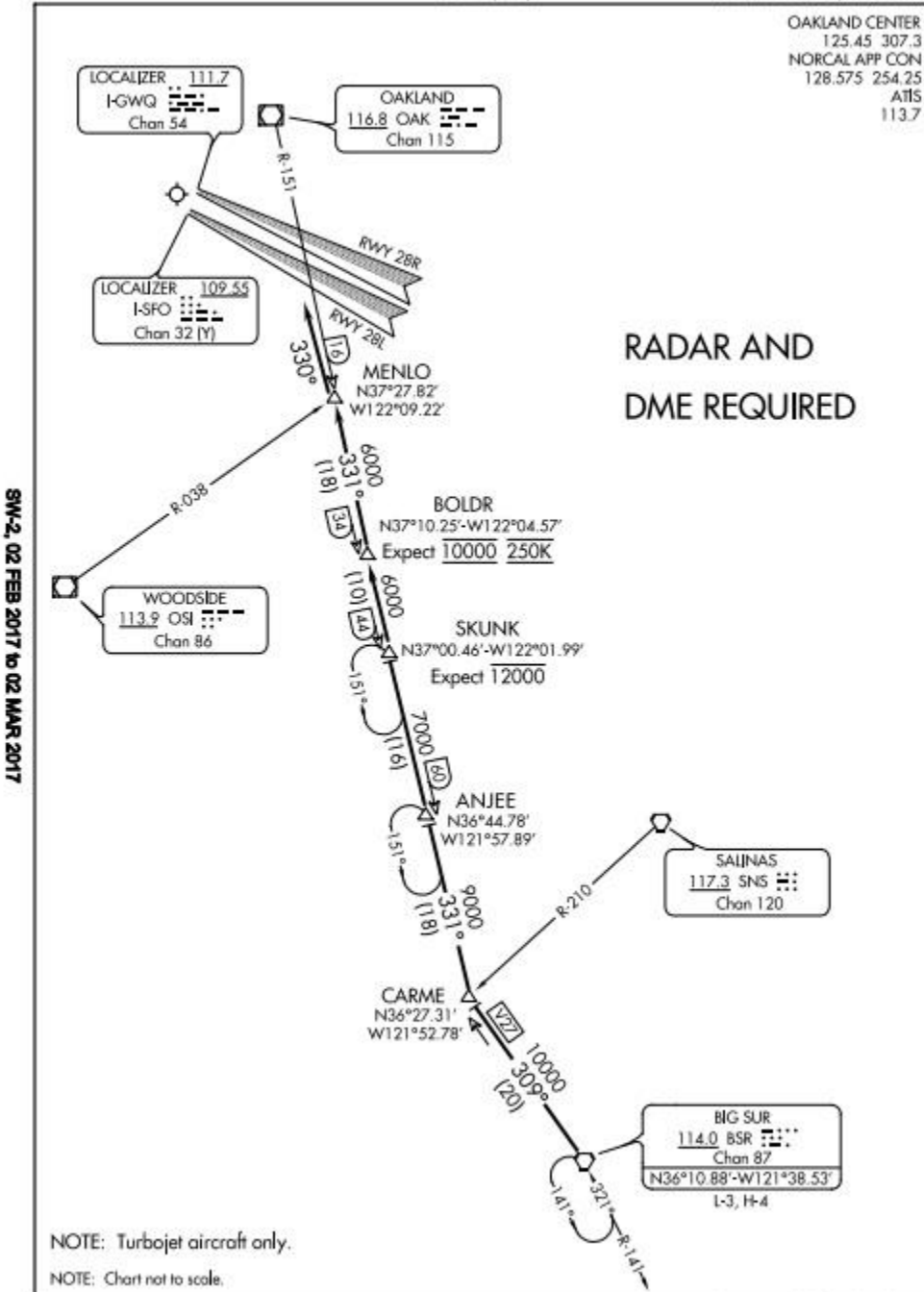
(BSR.BSR3) 16259

**BIG SUR THREE ARRIVAL**

ST-375 (FAA)

SAN FRANCISCO INTL (SFO)  
SAN FRANCISCO, CALIFORNIA

OAKLAND CENTER  
125.45 307.3  
NORCAL APP CON  
128.575 254.25  
ATIS  
113.7



**BIG SUR THREE ARRIVAL**

(BSR.BSR3) 15SEP16

SAN FRANCISCO, CALIFORNIA  
SAN FRANCISCO INTL (SFO)